

3-Horse Gooseneck Walk-Thru Slant with Dress



Rear & Side unload ramps offer optimum versatility with ease of handling

**Safe,
Comfortable,
Versatile
and Stylish.**

HAWK's design experience and attention to detail equals unmatched quality and value. Travel in confidence with the industry leader.

Standard Features Include:

- Fully Lined and Insulated Walls and Doors
- White or Pewter Aluminum Outer Shell
- Custom Painted Accent Color
- Fiberglass Roof and Fenders
- Powder Coated Removable Interior Parts
- L.E.D. lights
- Sealed Fuse Box
- Transferable Warranty



Hawk
T R A I L E R S

Hawk

TRAILERS

HAWK TRAILERS

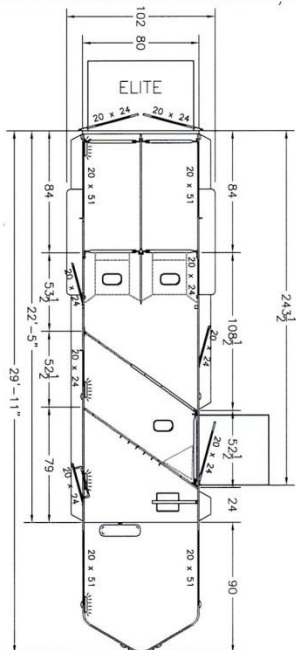
3 Horse Gooseneck Walk Thru/Slant w/dress

Overall Length	29'11"	29'11"	3 H. w/dress Custom	29'11"	3 H. w/dress Elite
Width 80"	S	S		S	S
Stall Length 7'	S	S		S	S
Inside Height 7'6"	S	S		S	S
2-5/16" Stallion Gooseneck coupler	O	O		O	O
2-5/16" Futton Gooseneck coupler w/cable release	S	S		S	S
Single speed single leg jack	S	S		S	S
Axle Capacity 12000# w/4 wheel electric brakes	S	S		S	S
ST23580R16 (D) Radial Silver rims, Elite Aluminum rims	S	S		S	S
Spare Tire & rim w/vinyl cover	S	S		S	S
GN sidewall w/dw 20x51 (1) each side	S	S		S	S
20X24 w/dw in dress door	O	O		O	O
20X24 w/dw at horse head area RS	S	S		S	S
4' R.S. ramp & storm w/stainless steel cam latches &/ 20X24 w/dw	S	S		S	S
Slant stall divider (1) (telescoping)	S	S		S	S
20X24 w/dw at DS slant butt wall	S	S		S	S
Storm doors & stainless steel cam latches	S	S		S	S
Storm door windows 20X24	O	O		O	O
Sidewall w/dw 20X51	S	S		S	S
Carpet on floor in dress & Gooseneck floor	O	O		O	O
Carpet on bulkhead wall & jacksheet wall	O	O		O	O
Saddle racks	3	3		3	3
Bridle hook set bolt on (6) aluminum	S	S		S	S
Door tie backs all doors	S	S		S	S
Aluminum running boards	O	O		O	O
Diamond plate on fenders & steps Elite only full fenders	S	S		S	S
Diamond plate on GN gussets & 18" under GN.	O	O		O	O
Rubberline stall area	S	S		S	S
Rubberline bulkhead wall	O	O		O	O
Breast/butt bar pads	O	O		O	O
Divider & sidewall pads	1"	2"		1"	2"
Rear header pad	S	S		S	S
Floor mats 5/8"	S	S		S	S
Root vents	S	S		S	S
Bush tray on dress door	S	S		S	S
Square feed bag (1) per stall (1) Triangle for slant stall	S	S		S	S
Interior head ties (3) per stall	S	S		S	S
Exterior head ties (1) per horse	S	S		S	S
Fuse block	S	S		S	S
Dome lights	2	2		2	2
D.O.T. Lighting	4	4		4	4
Empty trailer weight	6200 lbs				
Limited warranty on all products. See dealer for details.	5yr	7yr		5yr	7yr

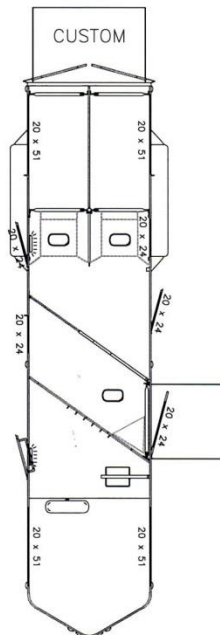
HAWK TRAILERS RESERVES THE RIGHT TO MAKE CHANGES WITHOUT NOTICE

EFFECTIVE 2/2008

3-Horse Gooseneck Walk-Thru Slant with Dress Elite



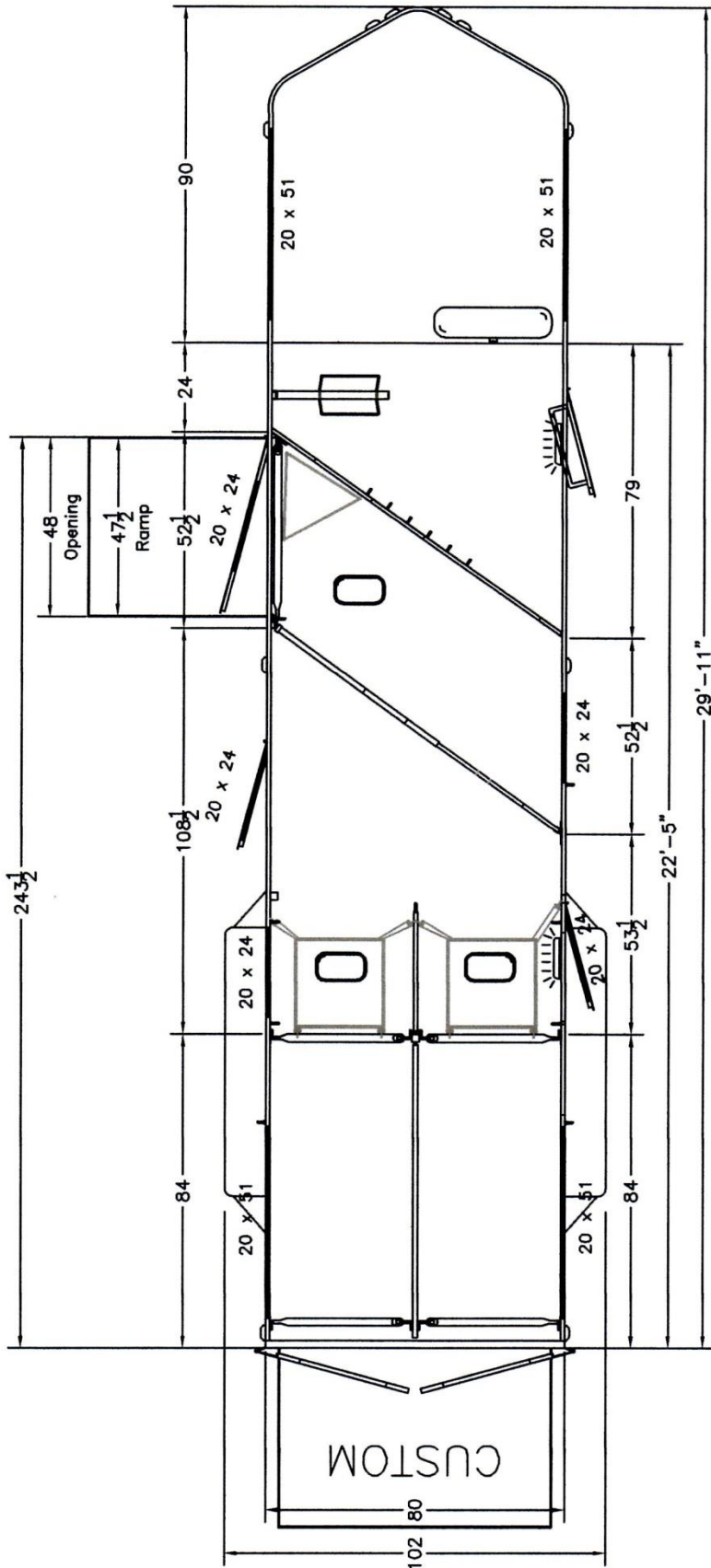
3-Horse Gooseneck Walk-Thru Slant with Dress Custom



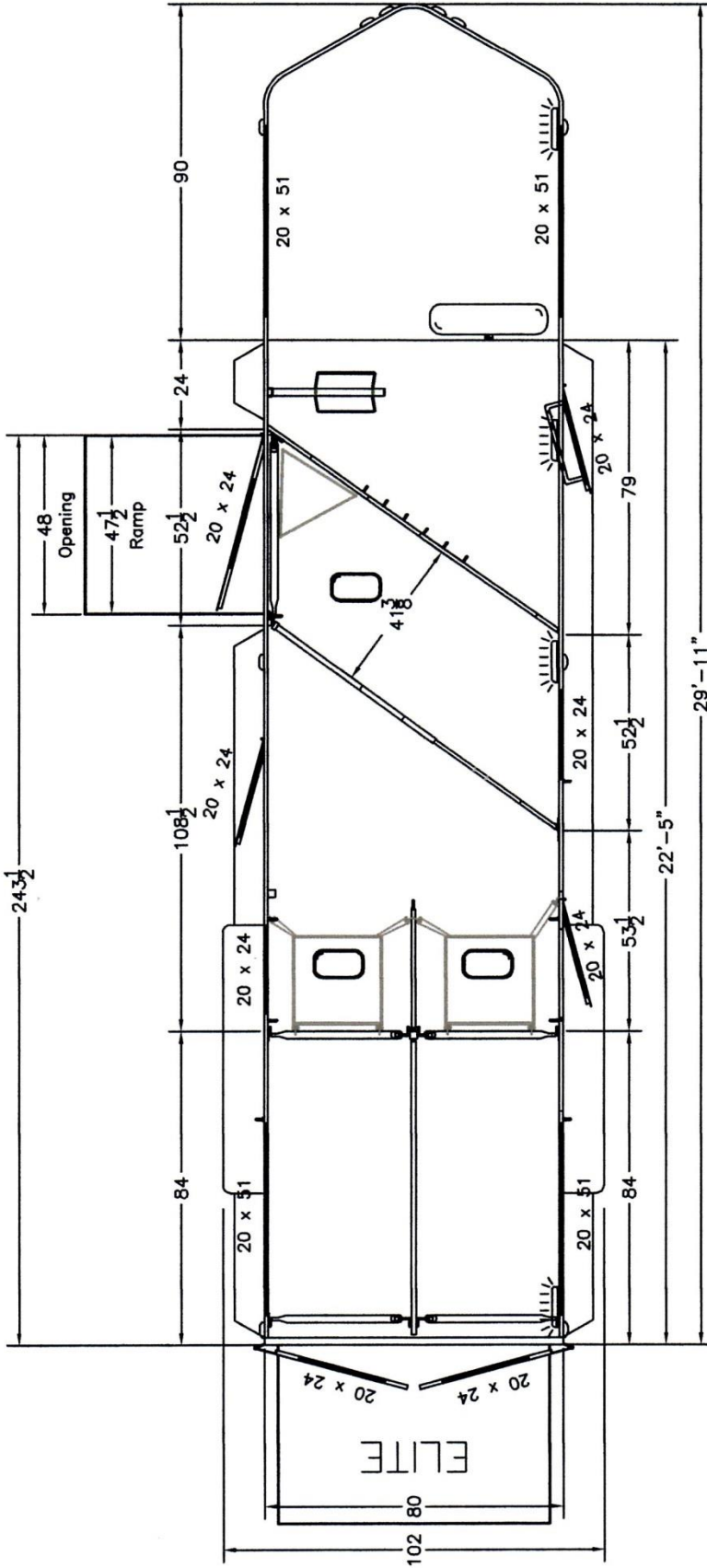
HAWK TRAILERS

3 Horse Gooseneck Walk Thru/Slant w/dress

	3 H. w/dress Custom	3 H. w/dress Elite
Overall Length	29'11"	29'11"
Width 80"	S	S
Stall Length 7'	S	S
Inside Height 7'6"	S	S
2-5/16" Stallion Gooseneck coupler	S	n/a
2-5/16" Fulton Gooseneck coupler w/cable release	O	S
Single speed single leg jack	S	S
Axle Capacity 12000# w/4 wheel electric brakes	S	S
ST23580R16(E) Radial Silver rims, Elite Aluminum rims	S	S
Spare Tire & rim w/vinyl cover	S	S
GN sidewall wdw 20x51 (1) each side	S	S
20x24 wdw in dress door	O	S
20x24 wdw in walk thru door	S	S
20x24 wdw at horse head area RS	S	S
20x24 wdw at 3/4 door DS	S	S
4' R.S. ramp & storm w/bar latch &/ 20x24 wdw RS	S	S
Slant stall divider (1) (telescoping)	S	S
20X24 wdw at DS slant butt wall	S	S
Rear Storm doors & stainless steel cam latches	S	S
Rear Storm door windows 20x24	O	S
Sidewall wdw 20x51	2	2
Carpet on floor in dress & Gooseneck floor	S	S
Carpet on bulkhead wall & jacksheet wall	O	S
Saddle racks	3	3
Bridle hook set bolt on (6) aluminum	S	S
Door tie backs all doors	S	S
Aluminum running boards	O	S
Diamond plate on fenders & steps Elite only full fenders	S	S
Diamond plate 18" under G.N.	S	S
Diamond plate on GN gussets	O	S
Rubberline stall area (sidewalls only)	S	S
Rubberline bulkhead wall	O	S
Breast/butt bar pads	O	S
Divider & sidewall pads	1"	2"
Rear header pad	S	S
Floor mats 5/8"	S	S
Roof vents	3	3
Brush tray on dress door	S	S
Square feed bag (1) per stall (1) Triangle for slant stall	S	S
Interior head ties (3) per stall	S	S
Exterior head ties (1) per horse	S	S
Fuse block	S	S
Dome lights	2	4
Remote switch horse area lights	O	S
D.O.T Lighting	S	S
Empty trailer weight	6200 lbs	
Limited warranty on all products. See dealer for details.	7yr	7yr



Drawn:	Date:	Scale:	Tolerance:
JLS	2006	1:42	$\pm \frac{1}{16}$
3 Horse Gooseneck Walk-Thru Slant With Dress			
<i>Hawk Trailers</i>		MANAWA, WI	



Drawn: JLS

Date: 2006

Scale: 1:42

Tolerance: + 1/16
- 1/16

3 Horse Gooseneck Walk-Thru
Slant With Dress



Hawk Trailers
MANAWA, WI